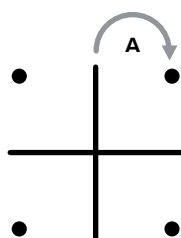


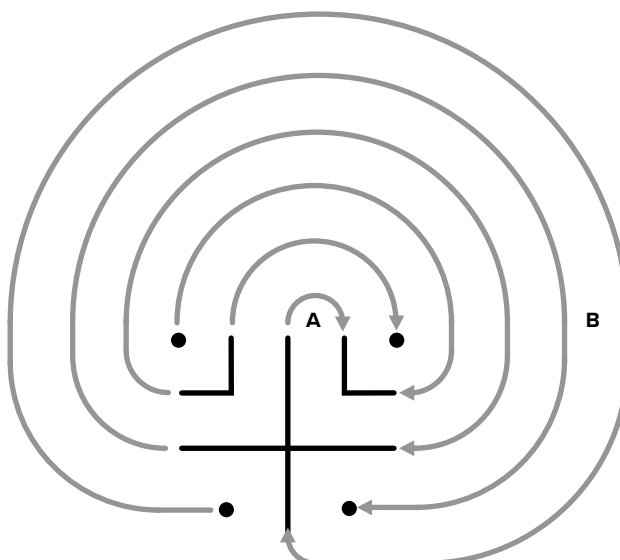
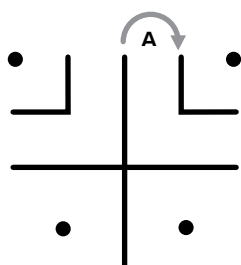
# Classical Labyrinth Seed Patterns



## Three Circuit



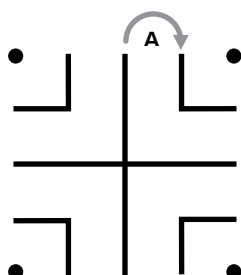
## Five Circuit



After drawing the basic seed pattern (dark lines), connect the points starting with path (A), draw from the left points to the right as shown. The same process applies to the Three and Seven circuit labyrinths. Choose the one that best suits the available space. Typically for a walking size labyrinth, the width of the path (B) should be no less than 300mm.

To create a right hand opening (for an anti-clockwise labyrinth) simply draw the connecting lines from right to left using the same seed pattern.

## Seven Circuit



Use these seed (starter) patterns to create a labyrinth almost anywhere. Draw one in the sand on the beach, or on the asphalt with chalk (as examples). You can use stones, buttons, seeds, anything you like, indoor and out. Be creative, have fun making a labyrinth (which is a meditative process in itself) then focus on the "walk".



[www.facebook.com/walkthelabyrinth](https://www.facebook.com/walkthelabyrinth)

Anne Conroy  
anne@activesage.co.nz

Glenn Conroy  
glenn@activesage.co.nz

Contact us anytime for ideas, advice or help you may need in creating any type of labyrinth, temporary or permanent.

